

SAX 350

DC SERVOMOTORS

SAX 350

Line of DC Servomotors for use with Microspeed, Microspeed Plus, Minispeed and Masterspeed Servo Amplifiers. Torque range from 0.7 to 1.8 Nm (100 to 257 oz-in).

Typical applications are: Robotics, X-Y Tables, Medical Equipment, Textile Equipment, Conveyors, Graphic Machinery, Packaging Machinery, Positioners, Converting Machinery and Feeders.



STANDARD FEATURES

- ✓ Ferrite permanent magnets
- ✓ Extremely favourable cost to performance ratio
- ✓ Suitable for personalisation
- ✓ Simple installation and use
- ✓ Full torque in a wide range of speeds
- ✓ High overload capacity
- ✓ Environmental working temperature: 5÷40 °C (41÷104°F)
- ✓ Protection class IP54
- ✓ Terminal box

OPTIONS

- ✓ Tachogenerator DT10 (10V/1000Rpm-4 poles)
- ✓ Encoder fitted
- ✓ Brake
- ✓ Thermoswitch
- ✓ Special Tachogenerator DT20 (20V/1000 Rpm 4 poles)
- ✓ Encoder predisposition ø6x10 mm
- ✓ Special Flange listings available upon request
- ✓ Special encoder pre-arrangement upon request
- ✓ Oil seal shaft ring

DESCRIPTION

The **SAX 350 DC** servomotors with permanent magnets are traditional, easy-to-use motors that are extremely trustworthy and efficient.

They have a favorable cost to performance ratio and are perfectly designed for use with the Microspeed, Minispeed and Masterspeed Servo amplifiers.

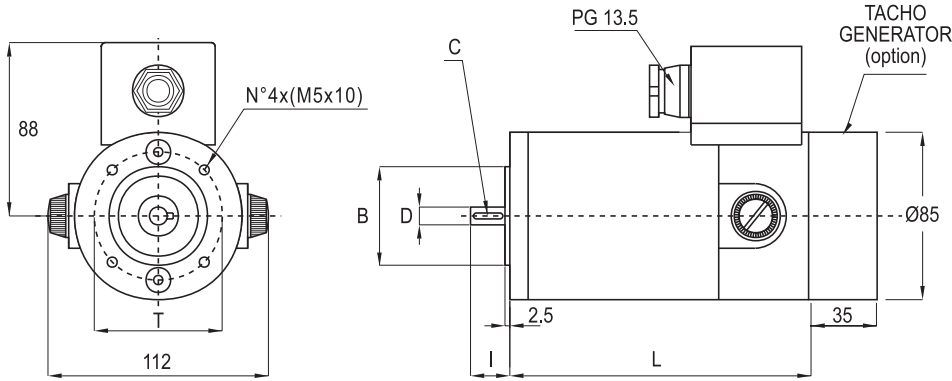
These servomotors (thanks to their permanent magnets) give high level performance and are extremely reliable, with great motion regularity at low speed especially with the tacho generator version.

SERIES	SAX 350 (2 POLES)								
	SIZE	S			M			L	
M₀ Stall Torque (Nm)	0.7	0.7	0.7	1.5	1.5	1.5	1.8	1.8	1.8
N_n Nominal Speed (Rpm)	3000	3000	3000	3000	3000	3000	3000	3000	3000
BEMF (Vdc)	26	42	59	41	49	60	51	61.5	78
In0 (A _{dc}) Stall Current (Δt=100°C)	9.2	6.8	4.3	12.8	10.2	8.4	12.3	9.9	7.9
COUPLE WITH DRIVES Microspeed Minispeed or Masterspeed	MCS 60 MS 60 MTS 60	MCS 60 MS 60 MTS 60	MCS 110 MS 140 MTS 140	MCSPPlus 60 MS 60 MTS 60	MCSPPlus 60 MS 60 MTS 60	MCS 110 MS 140 MTS 140	MCSPPlus 60 MS 60 MTS 60	MCS 110 MS 140 MTS 140	MCS 110 MS 140 MTS 140
J Rotor Inertia kgm ²	0.0003			0.0006			0.001		
J_B Brake Inertia kgm ²	0.000013								
Tacho Generator (Optional)	DT10 (10V / 1000 Rpm - 4 Poles)								
Brake (optional)	4 Nm - 24 Vdc (+5/-10%-0.85A)								

Drawings are not to scale (see quotations)

MECHANICAL DIMENSIONS

CODE 01= B14M56 (standard for Sax350 S)
CODE 03= B14M63 (standard for Sax 350 M-L)

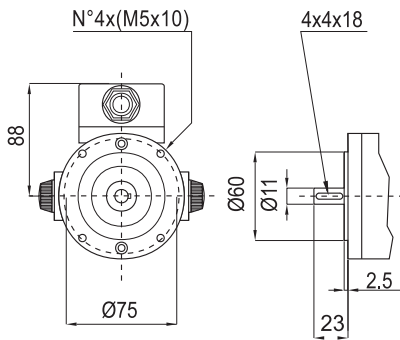


Versions with brake = L+40mm

SAX 350	S	M	L
B (mm)	50	60	60
D (mm)	9	11	11
C (mm)	3x3x15	4x4x18	4x4x18
I (mm)	20	23	23
T (mm)	65	75	75
L (mm)	153	203	253
Motor WT_M	3 Kg 6.6 Lbs	4.2 Kg 9.3 Lbs	6 Kg 13.3 Lbs
TACHO WT_T	0.3 Kg - 0.7 (Lbs)		
BRAKE WT_B	0.8 Kg - 1.8 (Lbs)		

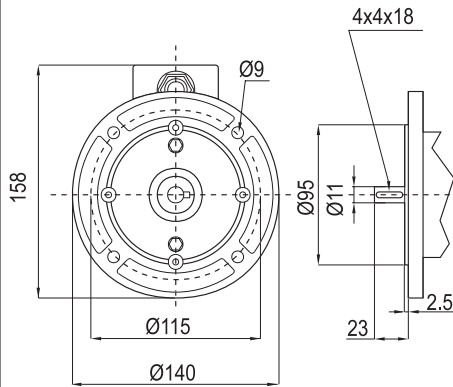
SPECIAL FLANGES & SHAFTS

CODE 03=B14M63



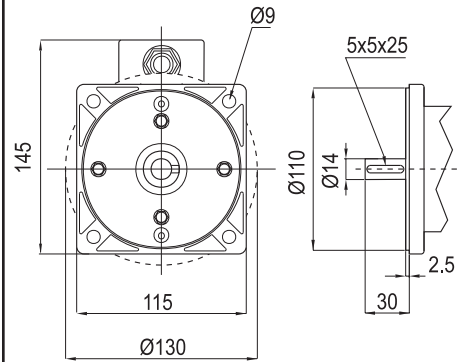
(option for SAX 350 S)

CODE 04=B5M63



(option for SAX 350 S-M-L)

CODE 02=B5M71



(option for SAX 350 L)

All dimensions are in mm To obtain the dimensions in INCHES, divide mm by 25.4

Ex: 153 mm = 6.02 Inches / 25.4



ORDERING CODE

Example:

SAX - 350 - S - 3.0 / 059 - 01 - 01 - M - 00

NAME: Line of Dc Servomotors

SERIES: 350

SIZE: S, M, or L

NOMINAL SPEED: (KRPM) Ex: 3.0 = 3000 Rpm (See table on Reverse)

BEMF VOLTAGE: Ex: 059 = 59 Vdc (See table on Reverse)

FLANGES & SHAFTS:

- 01 = B14M56 Ø9 (standard for SAX 350 S)
- 03 = B14M63 Ø11 (standard for SAX 350 M-L)
- 04 = B5M63 Ø11 (option for SAX 350 S-M-L)
- 02 = B5M71 Ø14 (option for SAX 350 L)

CUSTOM MADE:
00 = Standard

ELECTRICAL CONNECTIONS:
M = Terminal Box (standard)

OPTIONS:

- 01 = Tacho DT10 (standard)
- 04 = Brake No Tacho
- 06 = Brake + Tacho DT10
- 09 = Only Motor (W/O Tacho)