

## Series 422 Double Rails\*

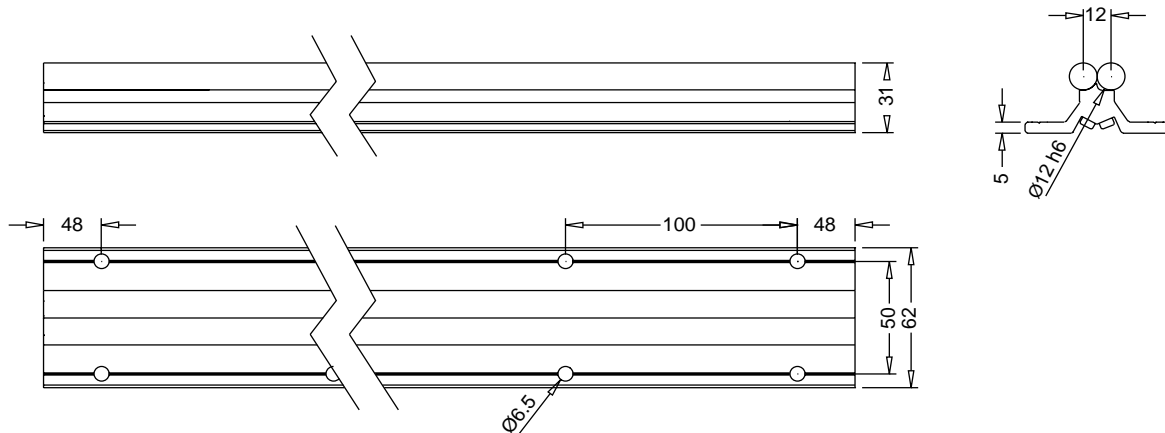
### FEATURES

- Guide Rails are fully supported uniformly throughout travel range on clear anodized aluminum support profile
- Steel shafts are connected and tightened against each other by M5 screws. This produces a precise and rigid rail system ideal for most Linear Motion applications
- Guide Rails and Support Profile are sold as assembly in a variety of lengths
- Guide rails consist of two precision ground  $\text{\O}12$  mm Cf53 steel shafts, hardened to RC 62 + 2, with M5 threads on 100 mm centers
- Aluminum support profile has pairs of mounting holes at 100 mm intervals down the length of the rail system. Each pair of holes is 50 mm apart for easy mounting to our aluminum extrusions

\* This Linear System is patented.

Length mm	Catalog Number
400	KO6457P4222622
500	KO6457P4222722
600	KO6457P4222822
700	KO6457P4222922
800	KO6457P4222022
900	KO6457P4222122
1000	KO6457P4223222
1100	KO6457P4223322
1200	KO6457P4223422
1300	KO6457P4223522
1400	KO6457P4223622
1500	KO6457P4223722
1800	KO6457P4223022
2000	KO6457P4224222
2500	KO6457P4224722
3000	KO6457P4225222

**NOTE:** Actual length is 2 mm less than nominal length.





# Series 422 Compatible Carriages

## Bearing Carriage ZV6\*

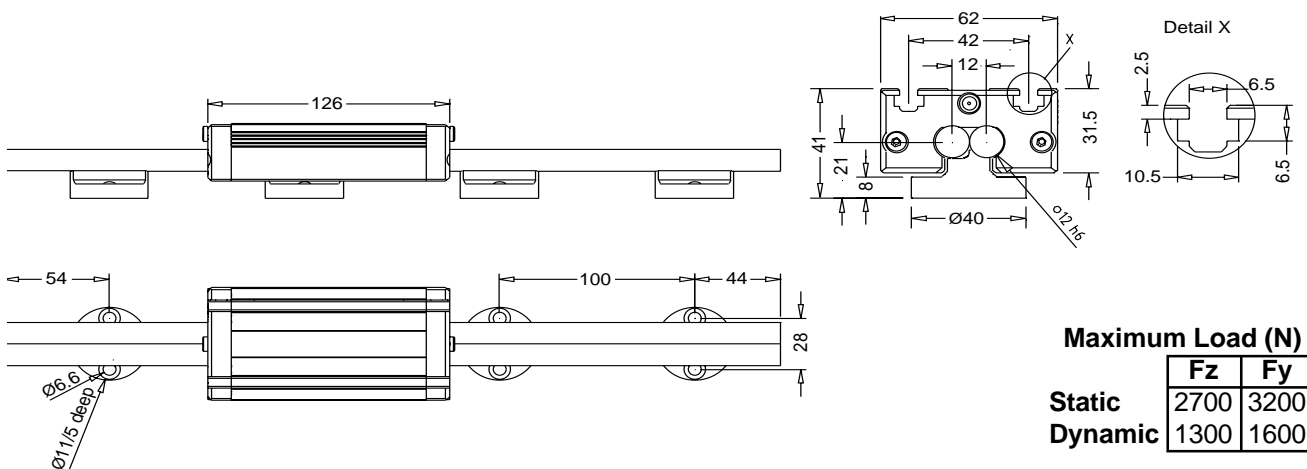
### FEATURES

- Carriage consists of milled aluminum block with steel core for a low cost yet durable bearing
- $\text{Ø}3.5$  mm ball bearings incorporated into four recirculating raceways
- Balls ride on steel core, this provides travel at up to 5 m/sec
- 2 T-slots on top surface for mounting of M6 screws or nuts
- Complete with wipers and lubrication ports
- Compatible with the Series 4 Double Rail, Series 422, 622 and 722 Double Rail Systems

\* This Linear System is patented.



BEARING CARRIAGE ZV6: KO68G2P445326



### Maximum Load (N)

	Fz	Fy
Static	2700	3200
Dynamic	1300	1600

### Maximum Moment (N · m)

	Mx	My	Mz
Static	29	100	120
Dynamic	14	51	60