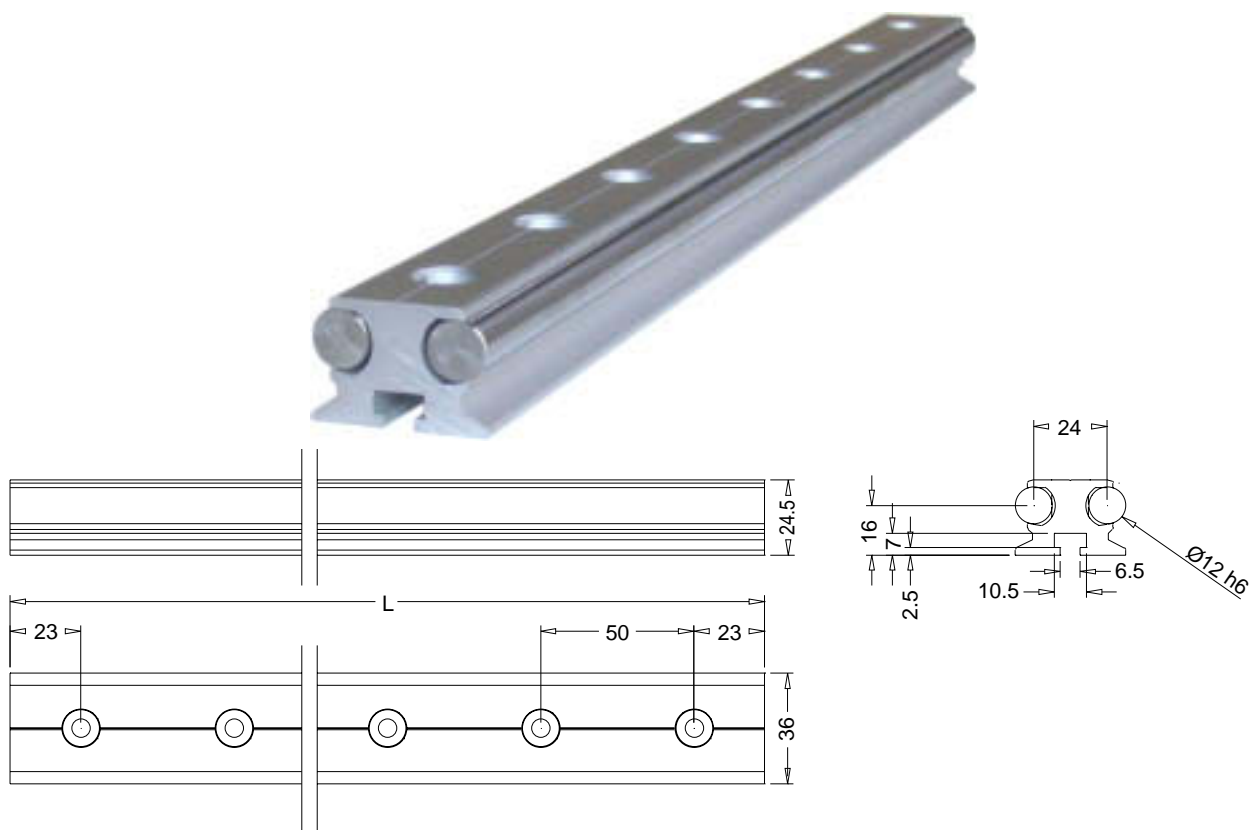


Series 3 Double Rails*

FEATURES

- Two parallel, hardened and ground 12 mm diameter steel shafts, accuracy grade h6, hardened to RC 62 ± 2
- Parallelism and accurate center distances achieved by rails and ground spacers inserted into the extrusion at 50 mm centers
- Lightweight, high stiffness
- Hardened spacers RC 62 with 6.5 mm diameter hole to accommodate mounting screws
- 3 carriage options with easy assembly and low friction
- Weight is 3 kg/m

* This Linear System is patented.



SERIES 3 DOUBLE RAIL

Catalog Number	Nominal Length (1) mm
KO6444P2232522	300
KO6444P2232622	400
KO6444P2232722	500
KO6444P2232822	600
KO6444P2232072	850
KO6444P2233222	1000
KO6444P2233322	1100

Catalog Number	Nominal Length (1) mm
KO6444P2233472	1250
KO6444P2233572	1350
KO6444P2233722	1500
KO6444P2233972	1750
KO6444P2234222	2000
KO6444P2234722	2500
KO6444P2235222	3000

(1) The actual length is 4 mm less than the nominal length

NOTE: STEEL SPACERS ARE NOT TO BE REMOVED

Series 3 Compatible Carriages

Series 3 Short Carriage*

FEATURES

- Two single bearings with machined bearing plate for mounted modular design
- Single-piece ground steel bearing core on each bearing
- 3.5 mm diameter steel balls
- Four independent recirculating ball bearing circuits per carriage
- Adjustable preload via two screws on carriage plate
- Replacement bearings available for each carriage

* This Linear System is patented.

SERIES 3 SHORT CARRIAGE: KO68G2P445223



TABLE 1:

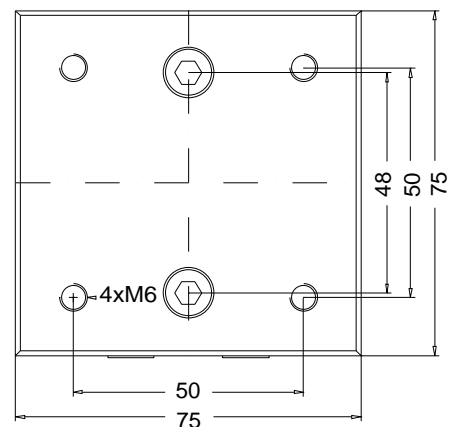
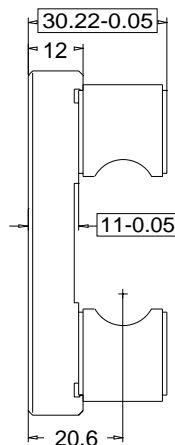
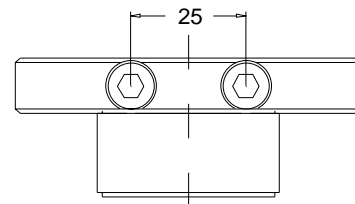
Maximum static and dynamic load capacity as a function of the angle A, of the applied force F.

Description	Maximum Load	
	Static	Dynamic
Short Carriage	D x 430 N	D x 400N

TABLE 2:

Maximum permissible moment for carriages.

Carriage	Moment Nm					
	Static			Dynamic		
	M _x	M _y	M _z	M _x	M _y	M _z
Short	15	7	7	7.3	3.7	3.7



Series 3 Compatible Carriages

Series 3 Long Carriage*

FEATURES

- Two single bearings with machined bearing plate for mounted modular design
- Single-piece ground steel bearing core on each bearing
- 3.5 mm diameter steel balls
- Four independent recirculating ball bearing circuits per carriage
- Adjustable preload via two screws on carriage plate
- Replacement bearings available for each carriage

* ThisLinear System is patented.

SERIES 1 LONG CARRIAGE: KO68G2P445224



TABLE 1:

Maximum static and dynamic load capacity as a function of the angle A, of the applied force F.

Description	Maximum Load	
	Static	Dynamic
Long Carriage	D x 1270 N	D x 750N

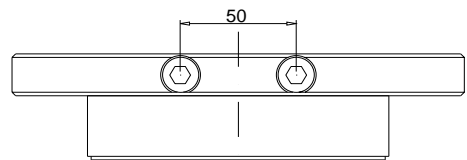
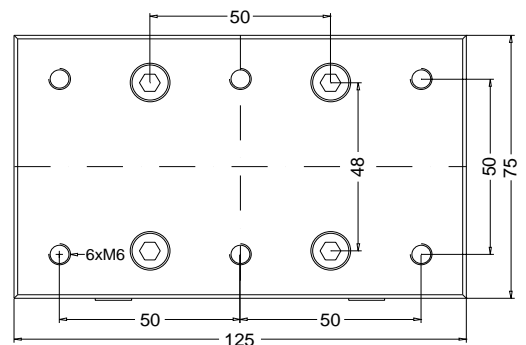
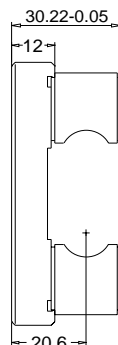


TABLE 2:

Maximum permissible moment for carriages

Carriage	Moment Nm					
	Static			Dynamic		
	M _x	M _y	M _z	M _x	M _y	M _z
Long	44	25	25	22	12.6	12.6



Series 3 Compatible Carriages

Roller Carriage 3*

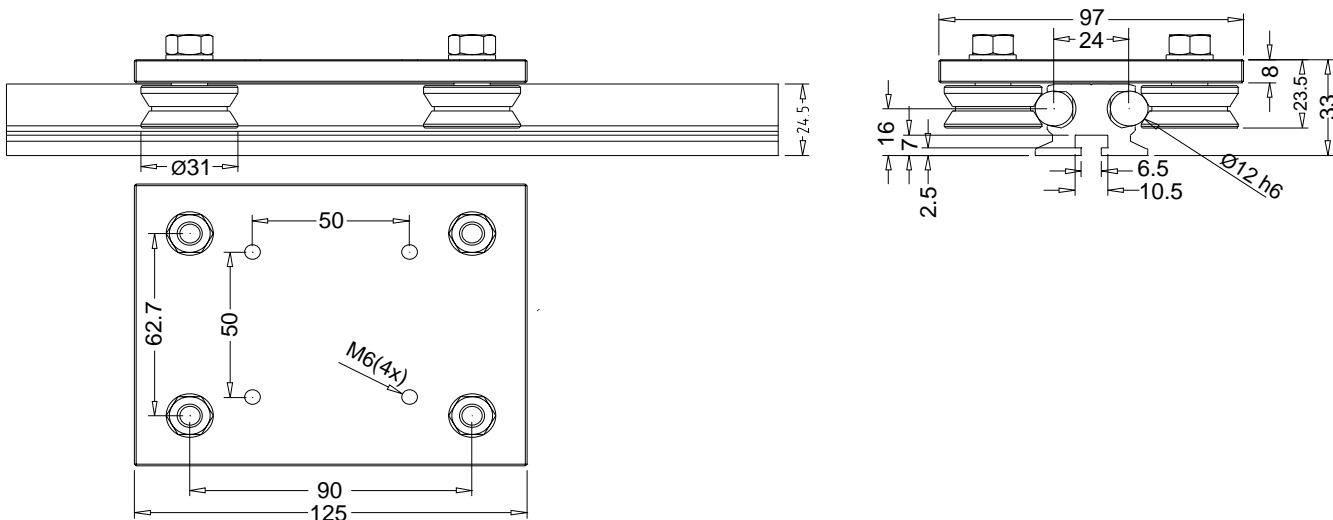
FEATURES

- For use with Series 3 Double Rail
- Factory preloaded with two rollers that have eccentric mounting to allow for easy preload and clearance adjustment
- Four precision rollers, $\varnothing 31$ mm on each plate. Each roller has two sealed bearings, lubricated for life, for minimal maintenance
- Consists of a ground and hardened steel plate 125 x 97 x 8 mm with four M6 threaded holes on a 50 mm grid for easy mounting
- Rollers are available separately for OEM applications
- Travel at up to 10 m/sec, with ultraquiet operation

* This Linear System is patented.



ROLLER CARRIAGE 1: KO68G2P445221



Maximum Load (N)

	F_z	F_y
Static	2800	2600
Dynamic	1400	1300

Maximum Moment (N·m)

	M_x	M_y	M_z
Static	90	125	65
Dynamic	45	60	32

Series 3 Compatible Carriages

Series 3 Linear Bearings*

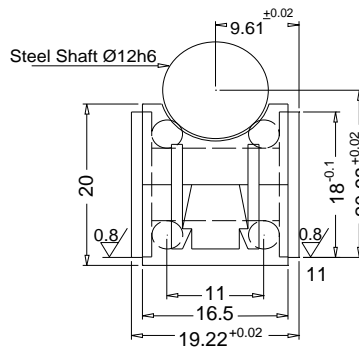
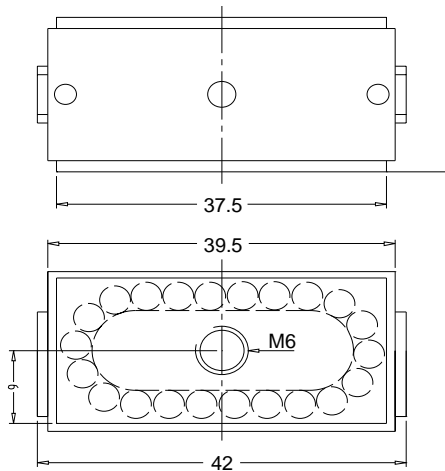
FEATURES

- Short bearing is replacement for short carriage; long bearing is replacement for long carriage
- 3.5 mm diameter steel balls
- Two independent recirculating ball bearing circuits per bearing
- Ideal for OEM applications
- Single-piece ground steel bearing core

* This Linear System is patented.

SERIES 1 SHORT BEARING: KO6722P444223

(sold in set of 2)



SERIES 3 LONG BEARING: KO6722P444224

(sold in set of 2)

