

Series 4 Double Rails

*

FEATURES

- Guide rails consist of two precision ground $\text{Ø}12$ mm steel shafts, with M5 threaded holes spaced 100 mm apart. Shaft is hardened to RC 62 \pm 2
- The two shafts are pulled together by the support block design, ensuring they are parallel to $\leq .02$ mm / 1 m and easy assembly
- The aluminum support blocks have two holes spaced 28 mm apart for easy mounting
- The support blocks can be set at increments of 100 mm depending on the size of the load
- Extremely low cost
- Can use Roller Carriage 4, Bearing Carriage ZV6 or Bearing Carriage 6
- The steel shafts can be staggered and built up to provide virtually any length of travel
- Note that the individual shafts and mounting blocks are sold separately
- Maximum linear speeds of up to 10 m/sec

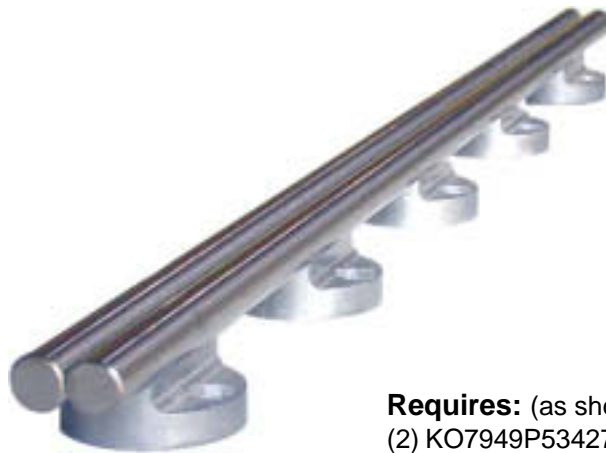
* This Linear System is patented.

Tapped Shaft

Length mm	Catalog Number
400	KO7949P5342622
500	KO7949P5342722
600	KO7949P5342822
700	KO7949P5342922
800	KO7949P5342022
900	KO7949P5342122
1000	KO7949P5343222
1100	KO7949P5343322
1200	KO7949P5343422
1300	KO7949P5343522
1400	KO7949P5343622
1500	KO7949P5343722
1800	KO7949P5343022
2000	KO7949P5344222
2500	KO7949P5344700
3000	KO7949P5345222

Mounting Block

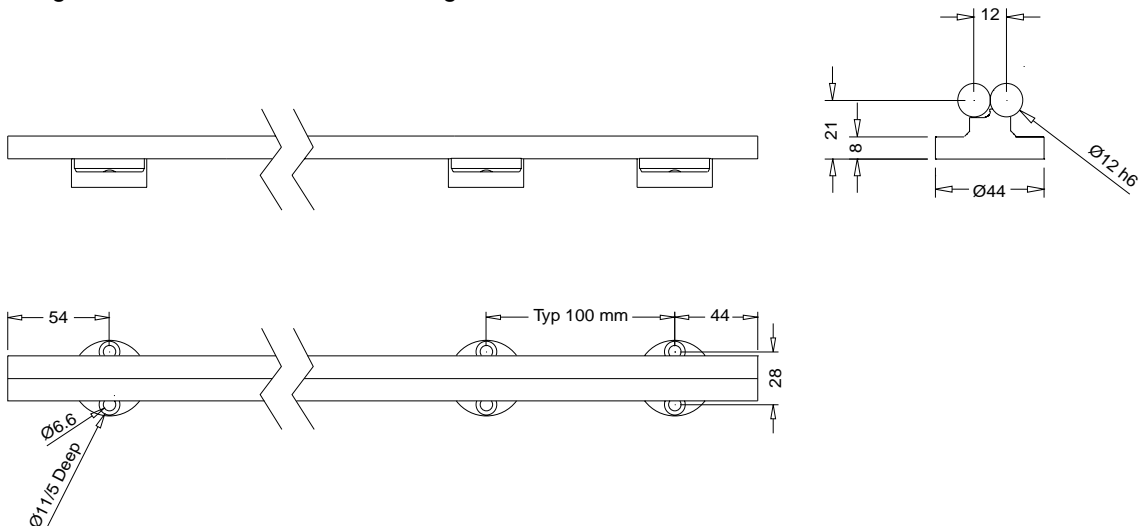
Catalog Number
KO7622P443723



Requires: (as shown)
 (2) KO7949P5342722 and
 (5) KO7622P443723

NOTE: Mounting screws for steel shaft are included with block.

NOTE: Actual length is 2 mm less than nominal length.



Series 4 Compatible Carriages

Roller Carriage 4*

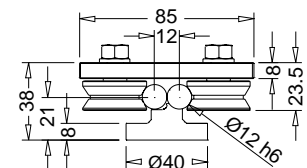
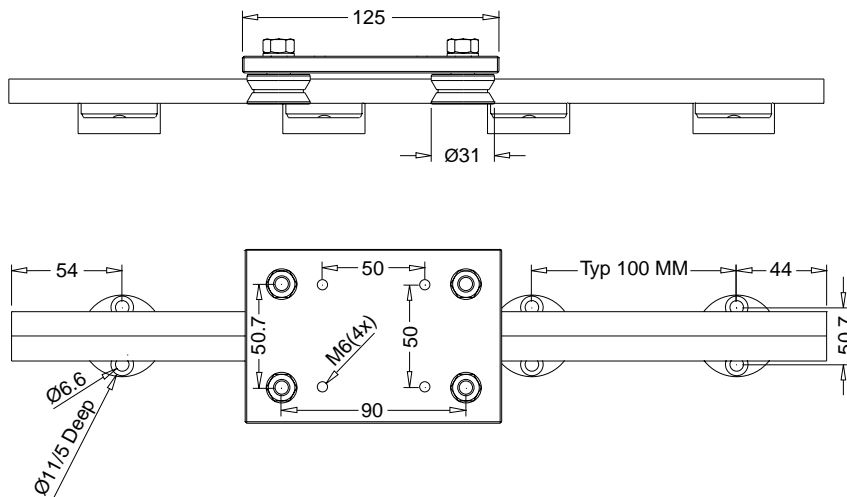
FEATURES

- For use with Series 4 and 422 Double Rail
- Factory preloaded with two rollers that have eccentric mounting to allow for easy preload and clearance adjustment
- Four precision rollers, $\text{Ø}31$ mm on each plate. Each roller has two sealed bearings, lubricated for life, for minimal maintenance
- Consists of a ground and hardened steel plate 125 x 97 x 8 mm with four M6 threaded holes on a 50 mm grid for easy mounting
- Rollers are available separately for OEM
- Travel at up to 10 m/sec, with ultraquiet operation

* This Linear System is patented.



ROLLER CARRIAGE 2: KO68G2P445220



Maximum Load (N)

	F _z	F _y
Static	2800	2600
Dynamic	1400	1300

Maximum Moment (N·m)

	M _x	M _y	M _z
Static	73	125	65
Dynamic	38	60	32

Series 4 Compatible Carriages

Bearing Carriage ZV6*

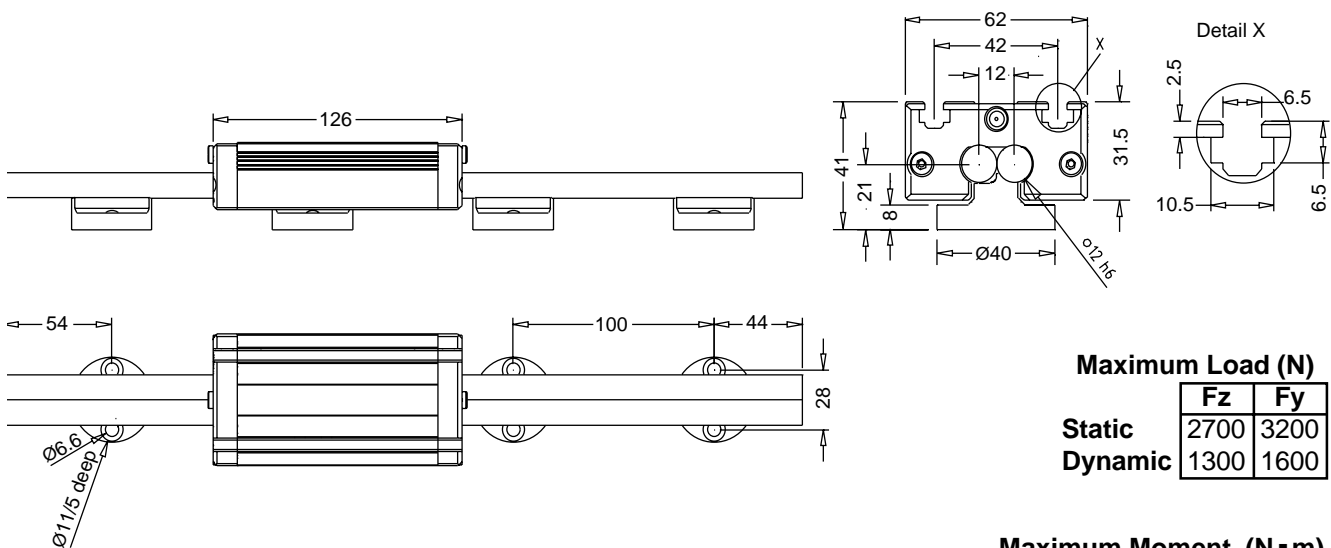
FEATURES

- Carriage consists of milled aluminum block with steel core for a low cost yet durable bearing
- $\text{Ø}3.5$ mm ball bearings incorporated into four recirculating raceways
- Balls ride on steel core, this provides travel at up to 5 m/sec
- 2 T-slots on top surface for mounting of M6 screws or nuts
- Complete with wipers and lubrication ports
- Compatible with the Series 4 Double Rail, Series 422, 622 and 722 Double Rail Systems

* This Linear System is patented.



BEARING CARRIAGE ZV6: KO68G2P445326



Maximum Load (N)

	Fz	Fy
Static	2700	3200
Dynamic	1300	1600

Maximum Moment (N·m)

	Mx	My	Mz
Static	29	100	120
Dynamic	14	51	60