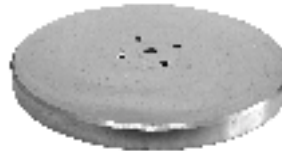


FEATURES

- ◆ Compact design suitable for general applications in horizontal or vertical mount
- ◆ Available with either 202 oz•in stepper motor or 120W servo motor
- ◆ Hardened, ground & flat milled Ø125 mm steel rotary surface
- ◆ Low backlash operation
- ◆ Large load capacity
- ◆ Ø23 mm hole through middle of rotary table
- ◆ Rigid cast aluminum body for durability
- ◆ Options include:
 - Magnetic brake
 - 3-jaw chuck
 - Ø490 mm aluminum utility disk



3-Jaw Chuck
KO7822P481282347



490 mm Diameter Aluminum Flat Disk
KO7822P481273722

CATALOG NUMBER

KO58 2P485

Motor Drive

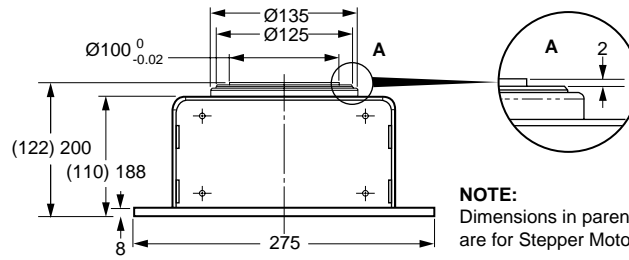
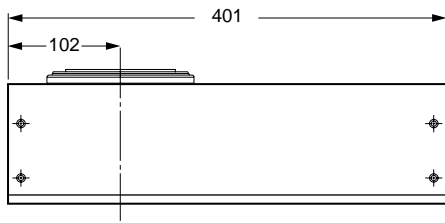
- V Stepper Motor
- Y Servo Motor

Brake

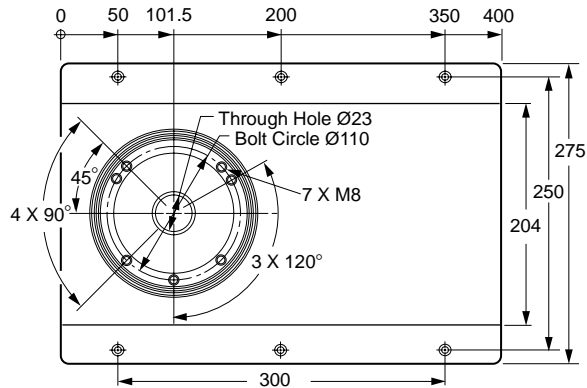
- 2 No Brake
- 3 24V DC Brake

Output Reduction

- 2 1: 24
- 3 1: 52
- 4 1: 100



NOTE:
Dimensions in parentheses are for Stepper Motor Unit.



SPECIFICATIONS	
POSITIONING ACCURACY	
Runout of Face Plate	≤ 0.02 mm
Concentricity of Face Plate	≤ 0.02 mm
Concentricity of the Center Shaft	≤ 0.02 mm
MATERIAL	
Body	Aluminum Casting
Tracks	Hardened and Ground Tool Steel
Roll Barrel	Roller Bearing Steel
Setup Assembly	Any Position
Limit Switch	Reed Sensor
Operating Temperature Range	0°C to +70°C
Max. Force Load Perpendicular to Disc	5000 N (1125 lb) Brake Closed
Max. Torque Load on Disc about Disc Diameter	160 Nm (120 lb·ft) Brake Closed
Holding Torque of Magnetic Brake	55 Nm (40 lb·ft)

Motor Drive	Output Reduction	Resolution sec	Output Torque N·m	Output rpm	Max. Loads for Mounting Orientations (brake open) kg			
					Table:	Horizontal	Vertical	Vertical
					Load:	Vertical	Vertical	Horizontal
Stepper Motor	1:24	135	17.5	50		80	30	60
	1:52	62.3	38	23		120	40	80
	1:100	32.4	75	12		150	40	80
Servo Motor	1:24	54	45	125		100	30	60
	1:52	24.9	98	57		140	40	80
	1:100	12.9	188	30		170	40	80